

Display

Battery charge indicator (approx. 45 min. run time)

Akkuladestand (ca. 45 Min. Laufzeit)

Dirty water tank full

Schmutzwassertank voll

Level 2

Boost button
Boost-Taste



Fresh water tank empty
Frischwassertank leer

Level 1

Switch button
Einstellungstaste

On/Off switch
Ein-/Aus-Schalter

Scan code for videos
Code scannen für Videos

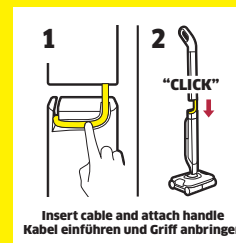


www.kaercher.com/fc7

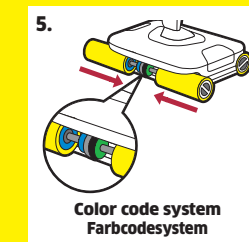
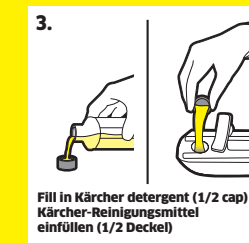
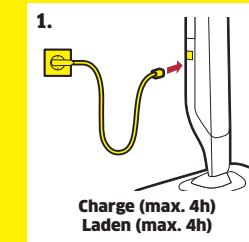
KÄRCHER

FC 7 CORDLESS QUICKSTART GUIDE

First assembly
Erstmontage



First steps before use
Erste Schritte vor dem Einsatz





Switch cleaning mode
Reinigungsmodus
wechseln

Level 1



Level 2



Activate boost function
Boost-Funktion
aktivieren



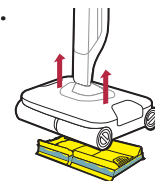
Please note:
Frequent boosting causes dirty
water tank to fill quickly.

Hinweis:
Durch Anwenden der Boostfunktion
wird der Schmutzwassertank
schneller voll.

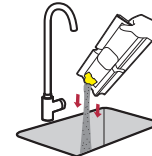
Cleaning and storing
Reinigung und Verstaung

Step 1: Clean the device
Schritt 1: Gerat reinigen

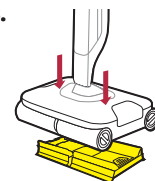
1.



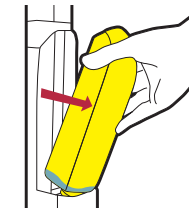
2.



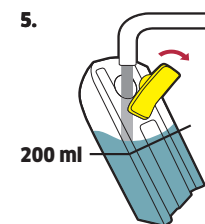
3.



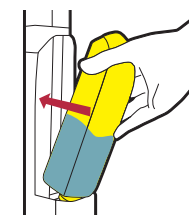
4.



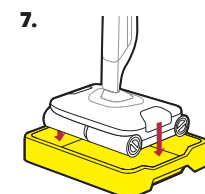
5.



6.



7.

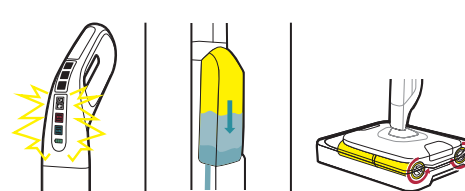


8.

Press 3 sec.
3 Sek.
gedruckt
halten



9.

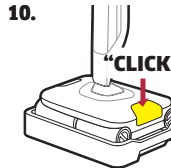


Please wait about 2 min. Bitte ca. 2 Min. warten

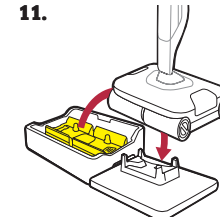
Step 2: Store the device
Schritt 2: Gerat verstaung



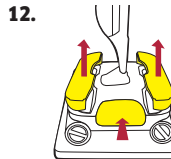
10.



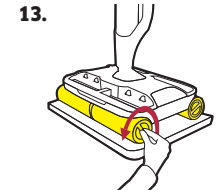
11.



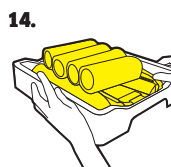
12.



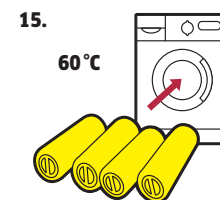
13.



14.



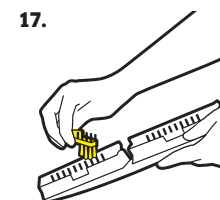
15.



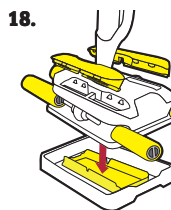
16.



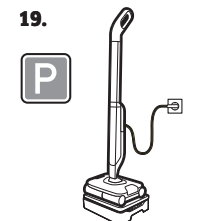
17.



18.

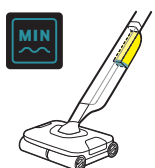


19.

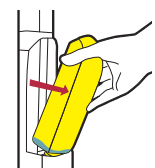


Refill fresh water tank
Frischwassertank
auffullen

1.



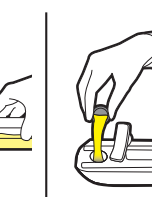
2.



3.



4.



5.

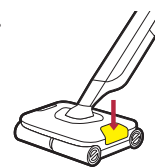


Empty dirty water tank
Schmutzwassertank
leeren

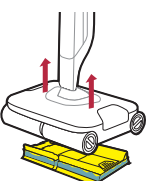
1.



2.



3.



4.



5.

